

Portfolio

2025

Sébastien Wamster

// Geomatician - Cartographer - Geographer - Urban Planner //

Mail : sebastien.wamster@okoe.fr

Website : okoe.fr

Malt : [Malt](#)

Linkedin : [Linkedin](#)

About



More than 80% of data has a geographical dimension.

Since 2019, I have supported over 40 clients in their innovative projects. These multi-disciplinary projects mainly combine urban planning, geomatics, geography, cartography, and data visualization.

With over 10 years of experience, I leverage my skills to assist companies in bringing their projects to life in these exciting and ever-evolving fields.

I've had the opportunity to collaborate with organizations of all sizes and sectors, ranging from start-ups to multinational corporations, as well as associations.

Whether you need occasional support to finalize a project or comprehensive long-term assistance, I can provide tailored solutions to meet your needs.

In parallel, I am developing my `okoe.walk` and `okoe.data` projects.

2024

01.

France Chaleur Urbaine

July 2022 - December 2024



Geomatics

France Chaleur Urbaine is a public service by [Beta.gouv.fr](https://beta.gouv.fr) that facilitates connection to district heating networks.

Creation of geographical data: production of data on district heating and cooling networks, Priority Development Areas (PDP), and potential zones for future network expansions.

Geocoding and georeferencing: standardization and precise localization of plans and databases for optimal cartographic use.

Spatial data analysis and processing: integration and manipulation of various databases (buildings, energy infrastructures) to model areas of interest.

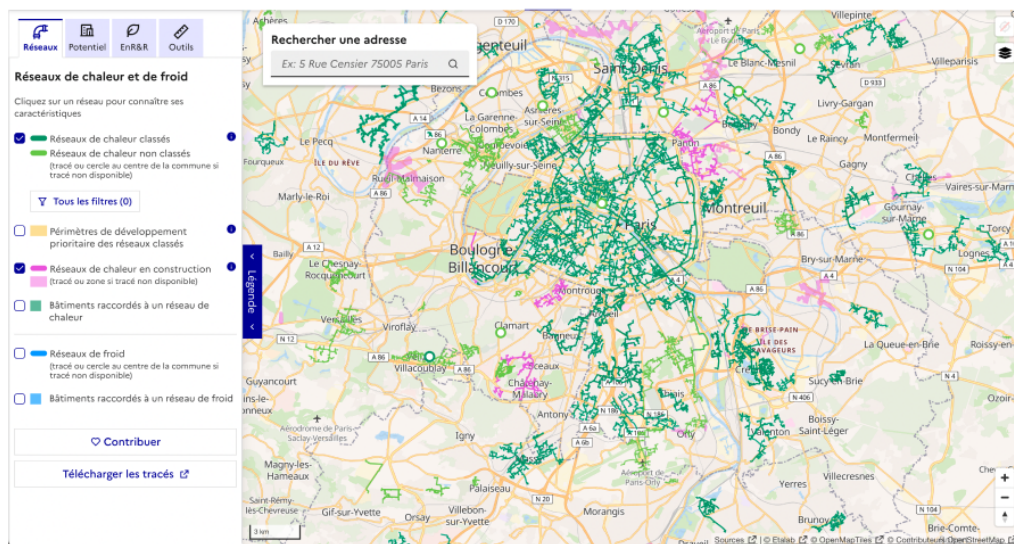
Conversion of multiple data sources: processing and unification of data from different sources (paper plans, AutoCAD, GIS) to ensure compatibility and usability.

Creation and management of databases: implementation of a PostgreSQL/PostGIS database to centralize and structure the data.

Open Data publication: preparation and processing of data to make them accessible to the public (data.gouv.fr).

Process automation: development of workflows to optimize data processing and updates.

Software used: QGIS, Postgres, PostGIS, Figma, AutoCAD, FME



02.

ADEME || Janvier - Août 2024



Geography / Geomatics

ADEME supports economic and institutional stakeholders in the ecological and energy transition in France.

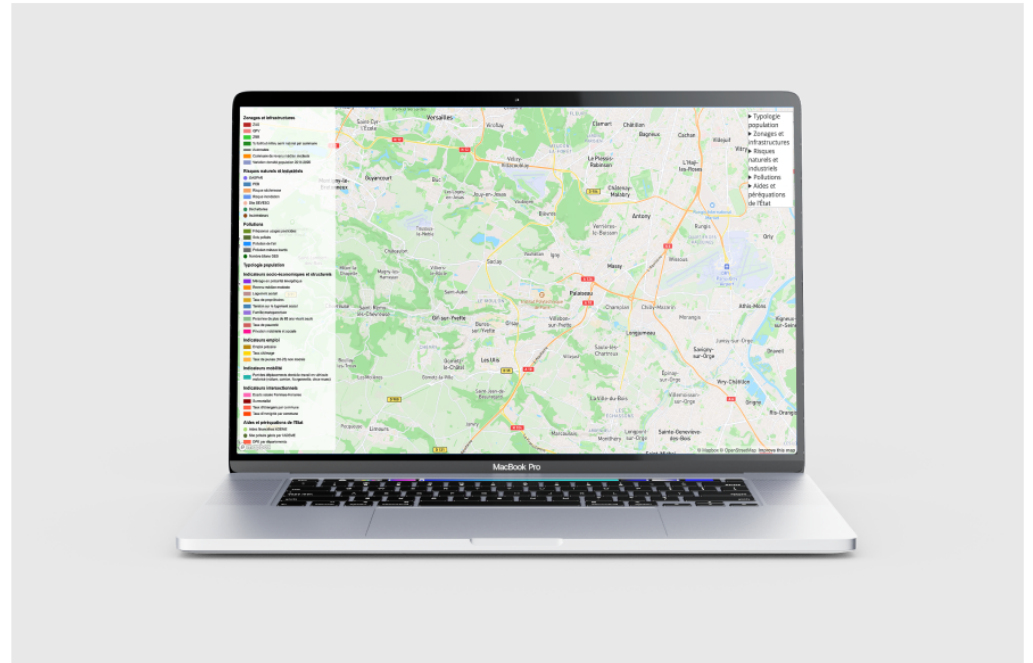
As part of its mission, ADEME launched a study titled "Ecological Transition and Indirect Discriminations" (TEDI).

The aim of this study is to analyze the potential indirect discriminations resulting from the ecological transition.

The goal is to design environmental policies and support systems that are more equitable, non-discriminatory, and that reduce inequalities rather than reinforcing them.

This analysis is based on a cross-disciplinary approach using bibliographies, statistical data, cartography, data visualization, and interviews with recognized experts.

Software used: QGIS, Leaflet, Mapbox, Postgres



2023

03.

Coop'HLM || July - September 2023



Cartography

Coop'HLM is a network of HLM (Social Housing) cooperatives in France, committed to the construction, management, and affordable homeownership of social housing, promoting cooperative and solidarity-based housing.

Creation of maps for the Coop'HLM Federation, highlighting real estate programs in Nantes. These maps were intended to be printed and distributed at the HLM Congress.

Software used: QGIS, Illustrator, Photoshop



04.

Comexposium



July - September 2023

Geography / Geomatics

Comexposium is one of the world's leading event organizers, hosting over 150 B2B and B2C events across more than 10 industry sectors, bringing together 48,000 exhibitors and 3.5 million visitors annually.

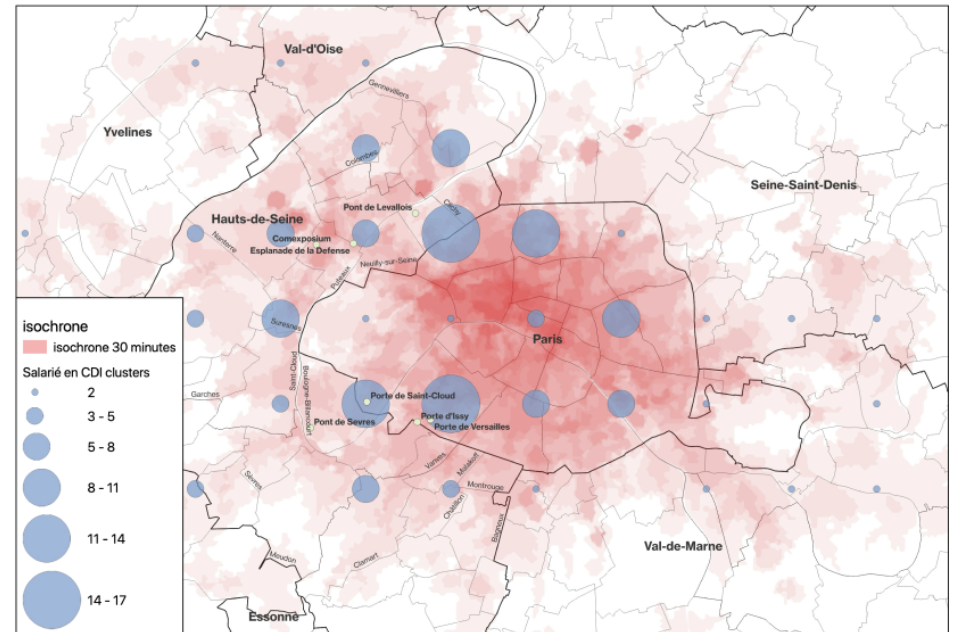
Advanced QGIS configuration for calculating travel times between retail locations and geographic areas (IRIS, municipalities).

Updating INSEE geographic and demographic reference data, creating a multi-country data reference, and automating internal processes.

Intersection de forte densité entre les zones isochrones des salariés



Isochrone des salariés en CDI à 30 minutes en transport en communs



05.

Mobsuccess

October 2022 - January 2023



Geography / Geomatics

Mobsuccess is a French ad-tech company specializing in geolocated digital marketing solutions that unify media, data, and artificial intelligence to optimize advertising campaigns.

Advanced QGIS configuration for calculating travel times between retail locations and geographic areas (IRIS, municipalities).

Updating INSEE geographic and demographic reference data.

Creation of trade areas and penetration rates for brands such as Decathlon, Gémo, and Gifi.

Development of a multi-country data reference and automation of internal processes.

2022

06.

Okeenea || September - December 2022

Okeenea
CRÉATEUR D'ACCESSIBILITÉ

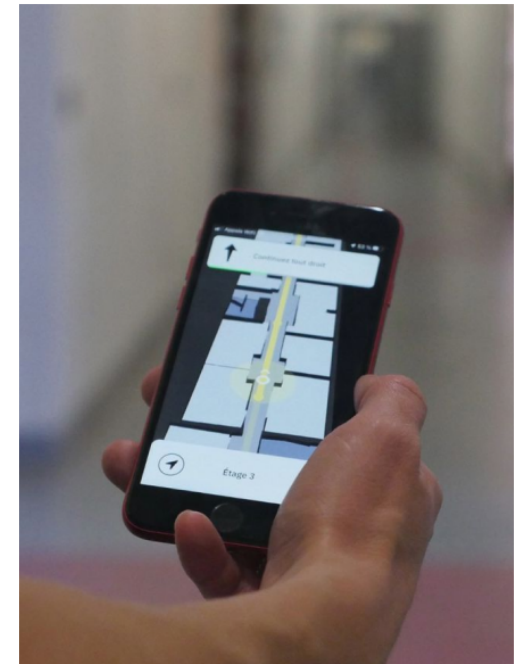
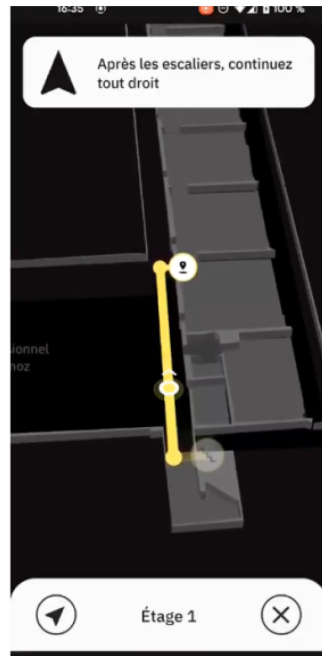
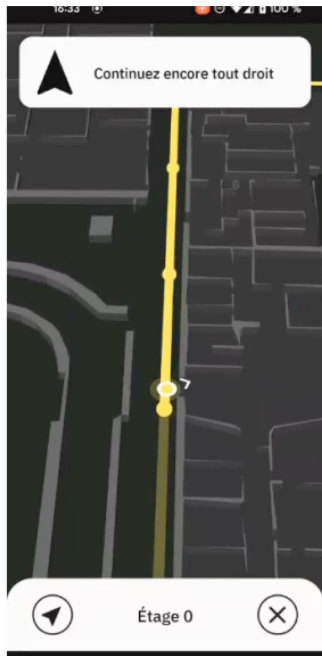
Geography / Geomatics

Okeenea is a French company specializing in innovative urban accessibility solutions, aiming to enhance mobility and autonomy for people with disabilities.

Creation of custom maps on Mapbox for sites equipped with Okeenea Digital's indoor navigation application, based on geolocated data.

Mission focused on accessibility for people with disabilities in public spaces such as museums and metro stations.

Software used: Mapbox, QGIS



07.

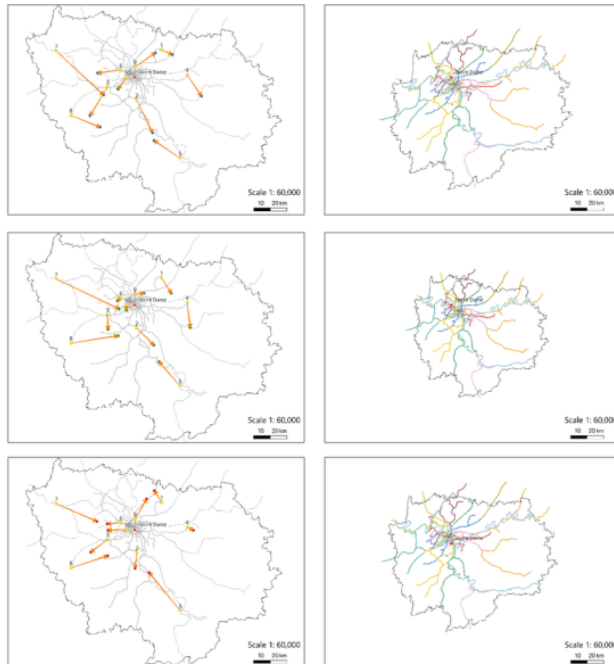
SNCF || March - December 2022



Geography / Geomatics / Cartography

SNCF is the leading French railway operator, providing passenger and freight transportation across France and Europe.

Research publication in the article:
"Transport makes cities: transit maps as major cognitive frames of metropolitan areas"



Development of innovative cartographies for transport network analysis and urban cognitive perceptions.

Creation of a public transport network map for Île-de-France incorporating real travel times between stations.

Visualization of geographic distortions from cognitive maps produced by public transport users/non-users in Paris, Berlin, and London.

Design of cartograms offering visual interpretations of spatial perceptions based on user experiences.

Software used: QGIS, R, Darcy



08.

N-vibe || March - July 2022

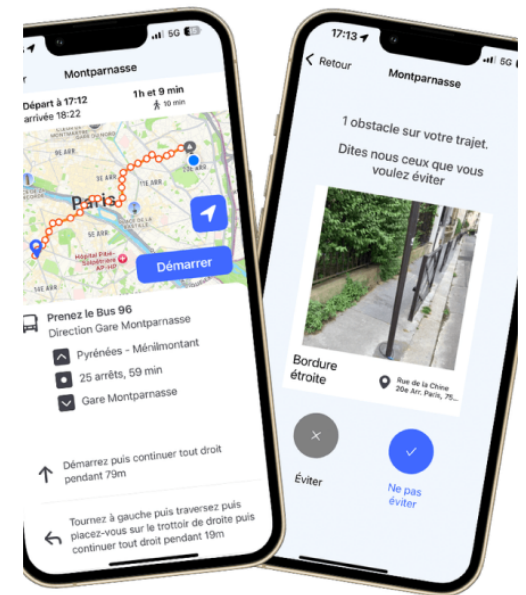


Assistance in reducing generation time and improving query performance on OpenStreetMap databases used for a vibrating GPS designed for blind and visually impaired individuals.

Software used: QGIS, Postgres, Openstreetmap

Geomatics

N-Vibe develops a vibrating GPS to guide blind and visually impaired individuals.



09.

Les Others || May - June 2022

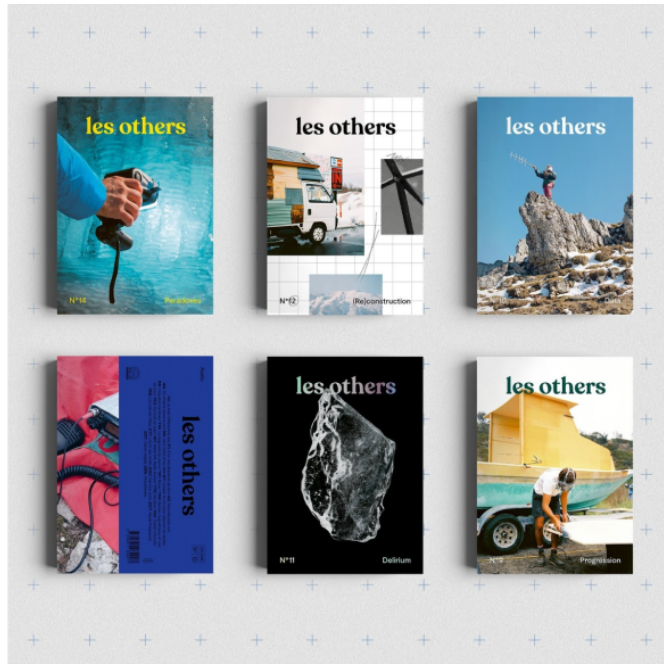
les others

Cartography

Les Others is an independent media platform dedicated to adventure and the great outdoors, offering inspiring stories through various formats such as a print magazine, podcast, and travel guides.

Creation of maps for Les Others' Instagram account.

Software used: QGIS, Illustrator, Photoshop, InDesign



10.

Axa Climate



November 2021 - January 2022

Geography / Geomatics

AXA Climate is a branch of AXA specializing in climate risk management solutions, helping companies adapt to environmental challenges and reduce their carbon footprint through analysis, insurance, and advisory services.

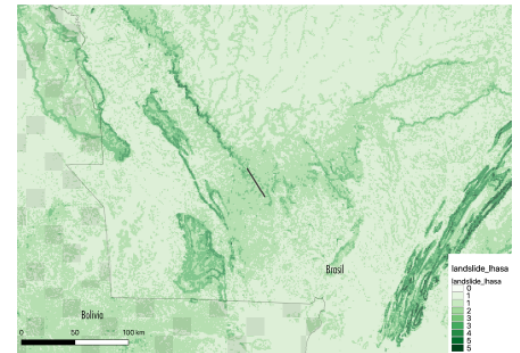
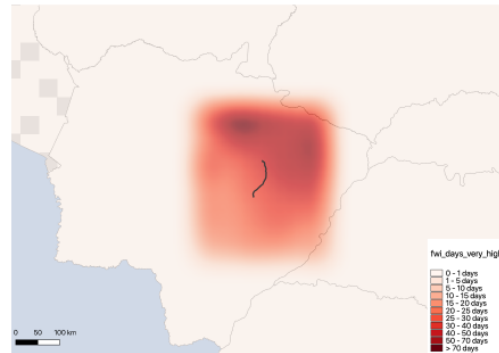
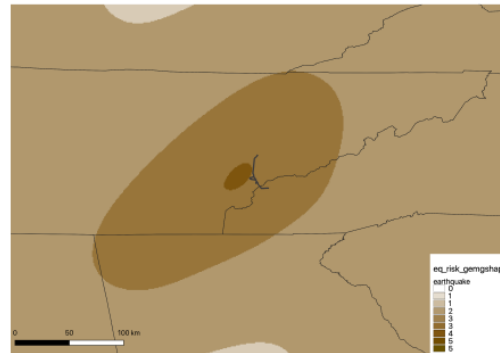
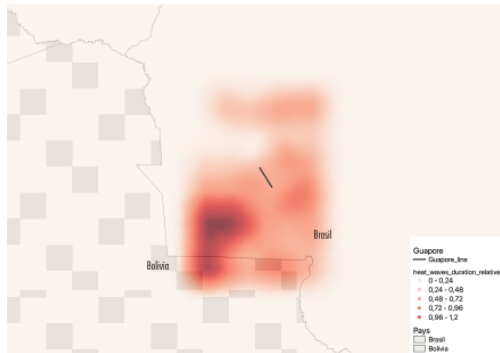
Conducted current and future climate analyses to assess climate change risks for infrastructure projects worldwide.

These analyses covered a variety of indicators grouped into several categories:

- Temperatures: number of extremely hot days (>30°C, >35°C), heatwaves, very cold days, seasonal and annual average temperatures.
- Precipitation and hydrology: days of heavy rainfall (>10 mm, >20 mm), annual and seasonal precipitation, river and coastal flood risks.
- Extreme events: cyclones, non-cyclonic winds, seismic risks, landslides, and wildfires.
- Climate stress: sea level rise, water stress, duration of heatwaves or cold spells, and droughts.

These indicators helped identify and quantify climate risks to guide strategic decisions and enhance the resilience of projects against future impacts.

Software used: QGIS, PostgreSQL



2021

11.

MyJungly || March - June 2021



Geography / Geomatics

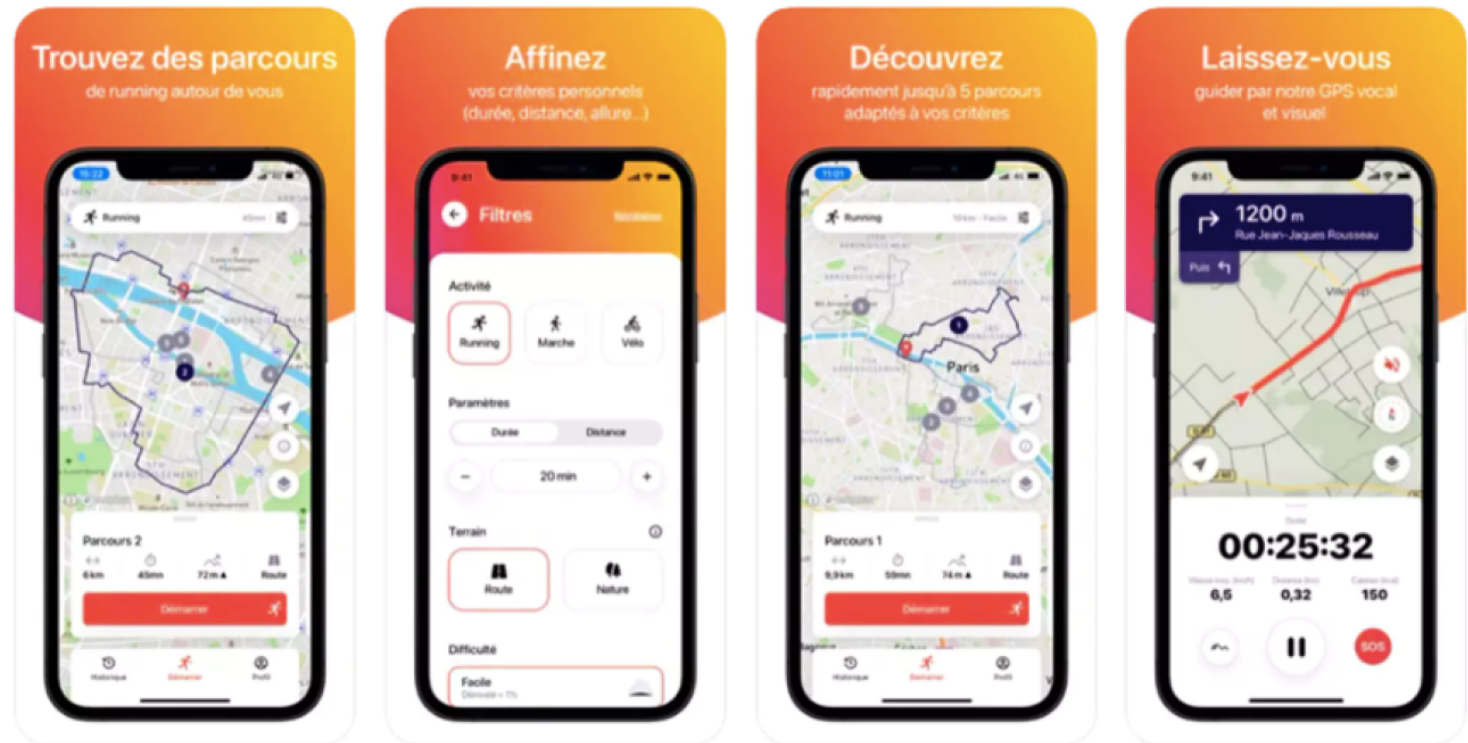
For 12 years, MyJungly Digital Workshop has been supporting UI/UX design, integration, and development with the expertise of over 40 specialists.

Development mission for the application to calculate tailored running routes, considering specific constraints: closed loops, defined distances, and surface types or proximity to natural spaces.

The mission involved leveraging OpenStreetMap data and GIS tools such as PostGIS and GraphHopper/OpenRouteService to optimize the route calculation engine.

Software used: QGIS, Openstreetmap

Runnrz creates customized routes in just 3 seconds based on selected personal criteria.



12.

Carmila



August - October 2021

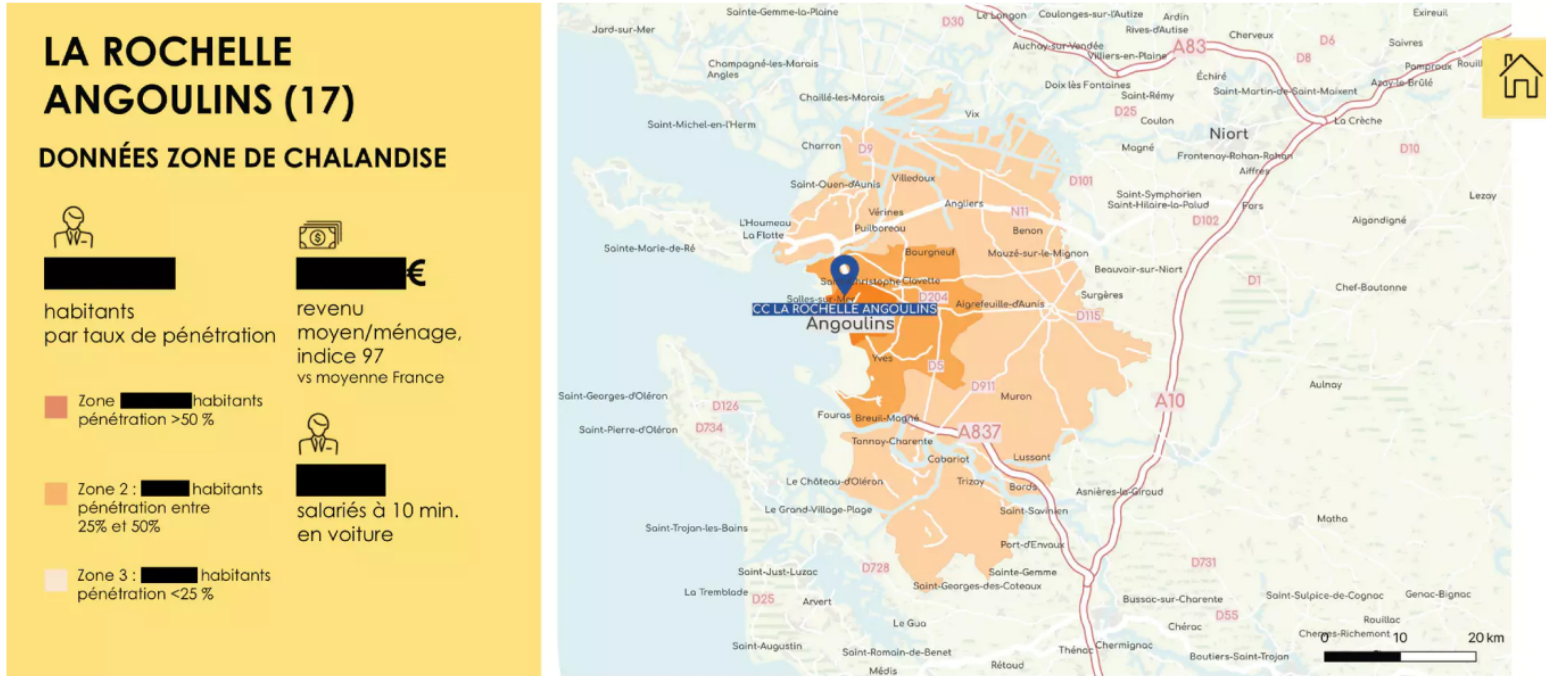
—

Geography / Geomatics / Cartography

Carmila is a company specialized in the management, enhancement, and development of shopping centers adjacent to Carrefour hypermarkets in Europe.

Mission for Carmila involving the production of over a hundred maps for all Carrefour shopping centers, including penetration rate maps, isochrone zones, and trade area calculations.

Presentation of these maps in their Assets Book and at the "Paris Retail Week" trade show.



DONNÉES CLIENTS

- %
femmes
■ % hommes
- %
clients satisfaits
et très satisfaits
vs ■ % moyenne*
- min
temps moyen passé
dans le centre
vs ■ min. moyenne*
- %
taux de transformation
galerie
vs ■ % moyenne*
- % CSP+
indice ■
vs moyenne France
- %
clients entre 35
et 44 ans
- %
familles avec
enfant <15 ans
vs ■ % moyenne*

10 *Panel Carmila



Passionate about urban planning, cartography, and geomatics, I love exploring how data can inform decisions and reveal hidden dynamics.

I created okoe.data, a mapping platform that aggregates, updates, and organizes geographic datasets from open data sources. This platform simplifies access to key information often essential for projects across various fields.

Members can also suggest new data intersections to further enrich the platform.

My journey as a freelancer has given me valuable geographic freedom.

After a year of immersion in Berlin, I now spend part of the year in Thailand.

It was there that the idea of okoe.walk was born—a volunteer-driven concept focused on research and planning support.

I am currently conducting research on the "connecting soi" concept, which explores alternative mobility solutions to reconnect fragmented neighborhood life.

In parallel, I develop objects and furniture made from recycled plastic, combining innovation with environmental consciousness.

Feel free to reach out to discuss your projects, explore innovative solutions, or see how my services can meet your needs.

